



19893RE Lodgehill Road, Selly Oak, Birmingham, B29 6NG

£99 Per Week

 5  2  1  4 D

£99PPPW
AVAILABLE NOW!

2025/2026 ACADEMIC YEAR Newly Refurbished Student Accommodation Suitable for Students and Professionals

LOW DEPOSIT: £400
15 mins walk to University Of Birmingham Campus
Close to Medical School and QE hospital
10 minutes walk to Bristol Road
Close to Selly Oak Train Station
Five Double bedrooms
Fully Furnished
Two Modern Bathrooms
New Central Heating System
Large Private Drive offering parking for upto 2 Cars and additional On Street Parking Available
Security Alarm
Available: Rent with Built-in Unlimited Bills Package for only £140.01 per person per week

Newly refurbished 5 double bedroom student house on Lodgehill Road good for students and working professionals. Featuring spacious accommodation with an open plan kitchen-lounge space and two modern bathrooms. Conveniently located within walking distance to the University, Selly Oak train station, and Bristol Road shopping.

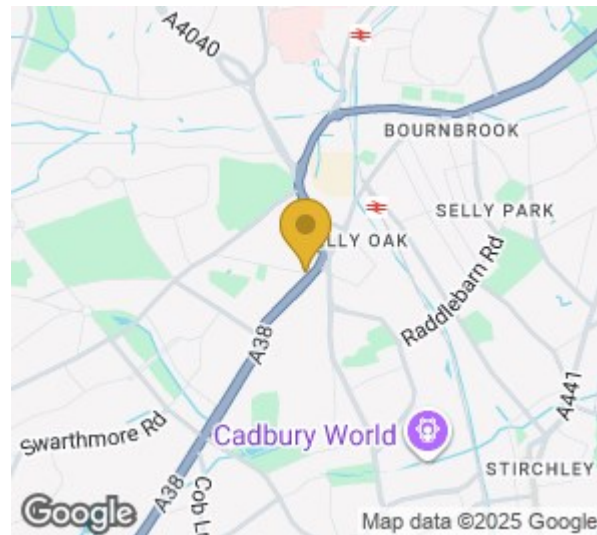
Don't let this opportunity slip through your fingers!
Schedule a viewing by appointment only with Mason Knight. Your dream home in Selly Oak awaits!

Viewing

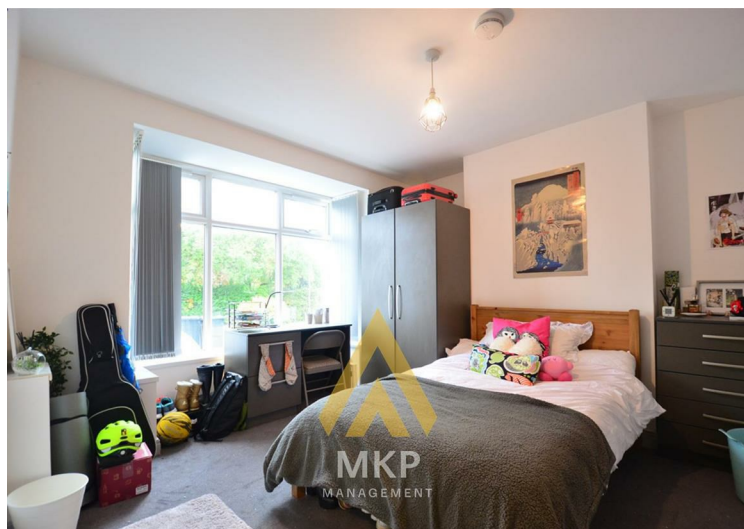
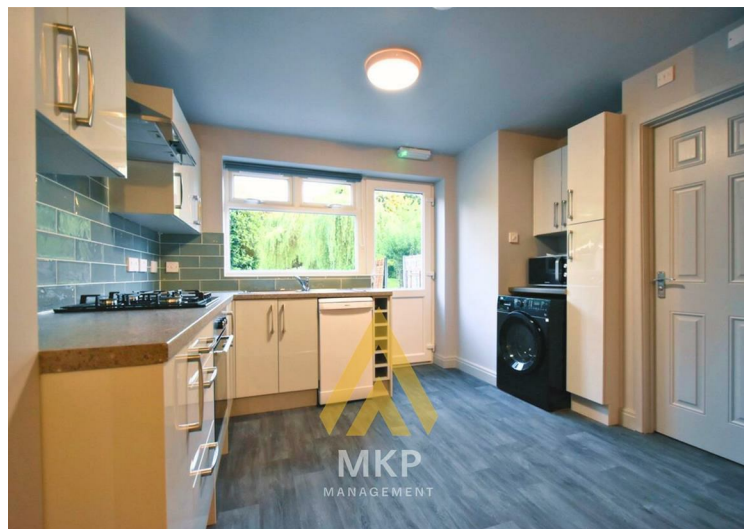
Please contact our MKP MANAGEMENT Office on 0121 472 5897
if you wish to arrange a viewing appointment for this property or require further information.



144 Lodge Hill Rd, Selly Oak, Birmingham



Energy Efficiency Rating			Environmental Impact (CO ₂) Rating		
	Current	Potential		Current	Potential
Very energy efficient - lower running costs			Very environmentally friendly - lower CO ₂ emissions		
(92 plus) A			(91-91) B		
(81-91) B			(69-80) C		
(69-80) C			(55-68) D		
(55-68) D			(38-54) E		
(38-54) E			(21-38) F		
(21-38) F			(1-20) G		
(1-20) G			Not environmentally friendly - higher CO ₂ emissions		
Not energy efficient - higher running costs			Not environmentally friendly - higher CO ₂ emissions		
England & Wales	EU Directive 2002/91/EC	79	England & Wales	EU Directive 2002/91/EC	74



These particulars, whilst believed to be accurate are set out as a general outline only for guidance and do not constitute any part of an offer or contract. Intending purchasers should not rely on them as statements of representation of fact, but must satisfy themselves by inspection or otherwise as to their accuracy. No person in this firm's employment has the authority to make or give any representation or warranty in respect of the property.